

PROVA PRATICA N. 3

TEST DI COOMBS INDIRETTO IN GRAVIDA 36[^] SETTIMANA

IL CANDIDATO IDENTIFICHI L'ANTICORPO IN CAUSA E PROPONGA AL
CURANTE I SUGGERIMENTI DERIVATI DALL'INTERPRETAZIONE
IMMUNOEMATOLOGICA

Roberto Valdez
 Roberto Valdez
 Prava Fisticas N: 3
 Jhon



Set ID-DiaPanel: 45161.70.x (Japan: 4516.70.xx)
 Set ID-DiaPanel P: 45171.70.x (Japan: 4517.70.xx)

LOT

06171.70.x - 06271.70.x (Japan: 0617.70.xx - 0627.70.xx)
 05361.70.x - 05461.70.x (Japan: 0536.70.xx - 0546.70.xx)

2023.08.07 (Japan)

Antigen-Table / Antigen-Table / Tabla de antígenos / Tabla de antígenos / Identificación de anticuerpos / Identificación de anticuerpos / Identificazione anticorpale / Identificazione anticorpale / Identificação do ant. corpus.



Rh-ir	Möglicher Genotyp / Probable Genotype / Donor		Rh-ir		Kell		Duffy		Kidd		Lewis		P		MNS		Luth.		Xg		Spez. Antigene / Special Types / Antígenos part. / Antígenos particulares / Otros Antígenos / Tipos especiales											
	R ₁ R ₂	R ₁ R ₁	D	C	E	C*	K	k	Kp ^a	Kp ^b	Js ^a	Js ^b	Fy ^a	Fy ^b	Jk ^a	Jk ^b	Le ^a	Le ^b	P ₁	M		N	S	S	Lu ^a	Lu ^b	Xg ^a	Xg ^b				
1	CCC ^a D. ee	R ₁ R ₁	009069	+	0	+	0	+	0	+	nt	nt	+	0	+	0	+	0	+	+	0	+	0	+	0	+	+	N/A	+	HLA ^{a*}	1	
2	CCD. ee	R ₁ R ₁	545751	+	0	+	0	+	0	+	nt	nt	0	+	0	+	0	+	0	+	0	+	0	+	0	+	+	N/A	+		2	
3	ccD. EE	R ₂ R ₂	264177	+	0	+	0	+	0	+	nt	nt	+	0	+	0	+	0	+	+	0	+	0	+	0	+	0	+	N/A	+	HLA ^{a*}	3
4	Ccddee	r'r	463919	0	+	0	+	0	+	0	+	nt	nt	+	0	+	0	+	0	+	0	+	0	+	0	+	+	N/A	+		4	
5	ccddEe	r'r	013448	0	0	+	0	+	0	+	nt	nt	+	0	+	0	+	0	+	0	+	0	+	0	+	+	+	N/A	+	HLA ^{a*}	5	
6	ccddeee	rr	128246	0	0	+	0	+	0	+	nt	nt	0	+	0	+	0	+	0	+	0	+	0	+	0	+	+	N/A	+		6	
7	ccddeee	rr	072605	0	0	+	0	+	0	+	nt	nt	0	+	0	+	0	+	0	+	0	+	0	+	0	+	nt	N/A	+		7	
8	ccD. ee	R ₀ r	556889	W ^{a*}	0	+	0	+	0	+	nt	nt	0	+	0	+	0	+	0	+	+	0	+	0	+	0	0	N/A	0	M1 ^{a*} / O Variant ^{a*}	8	
9	ccddeee	rr	832059	0	0	+	0	+	0	+	nt	nt	+	0	+	0	+	0	+	+	0	+	0	+	0	+	0	N/A	0		9	
10	ccddeee	rr	467062	0	0	+	0	+	0	+	nt	nt	0	+	0	+	0	+	0	+	+	0	+	0	+	0	+	N/A	+		10	
11	ccddeee	rr	193042	0	0	+	0	+	0	+	nt	nt	+	0	+	0	+	0	+	0	+	0	+	0	+	0	+	N/A	+		11	

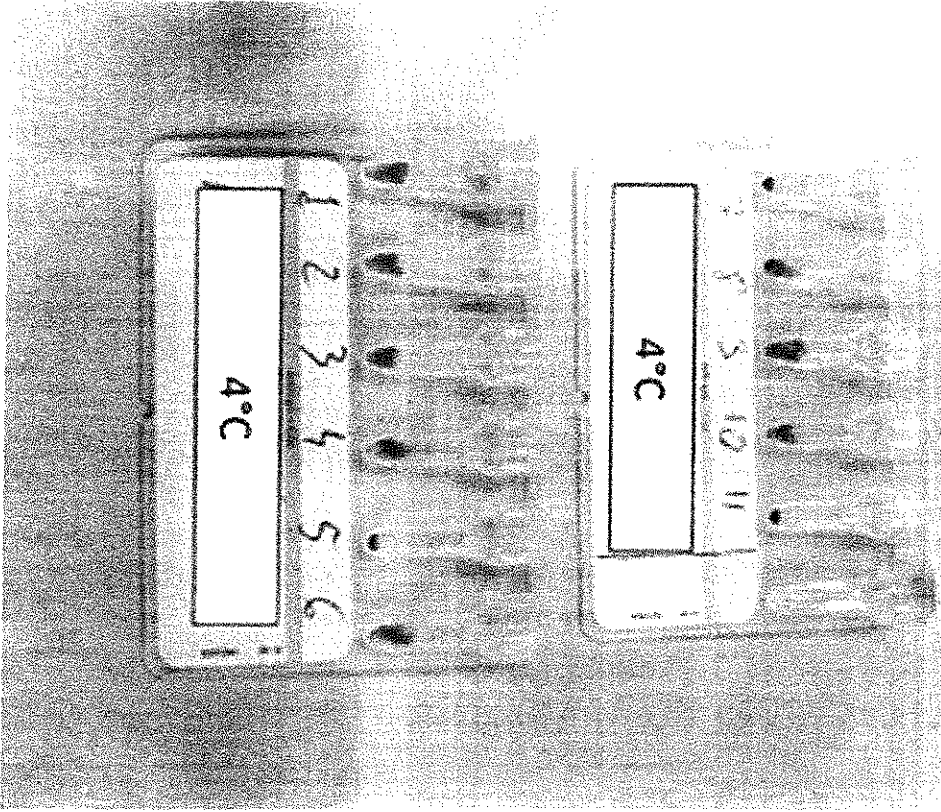
antigen Patient / Patient / Paciente / Paciente

markungen siehe rückseite / g. Remarks see overleaf / Voir les remarques au verso / Per le note consultare il retro / Ver observações no verso

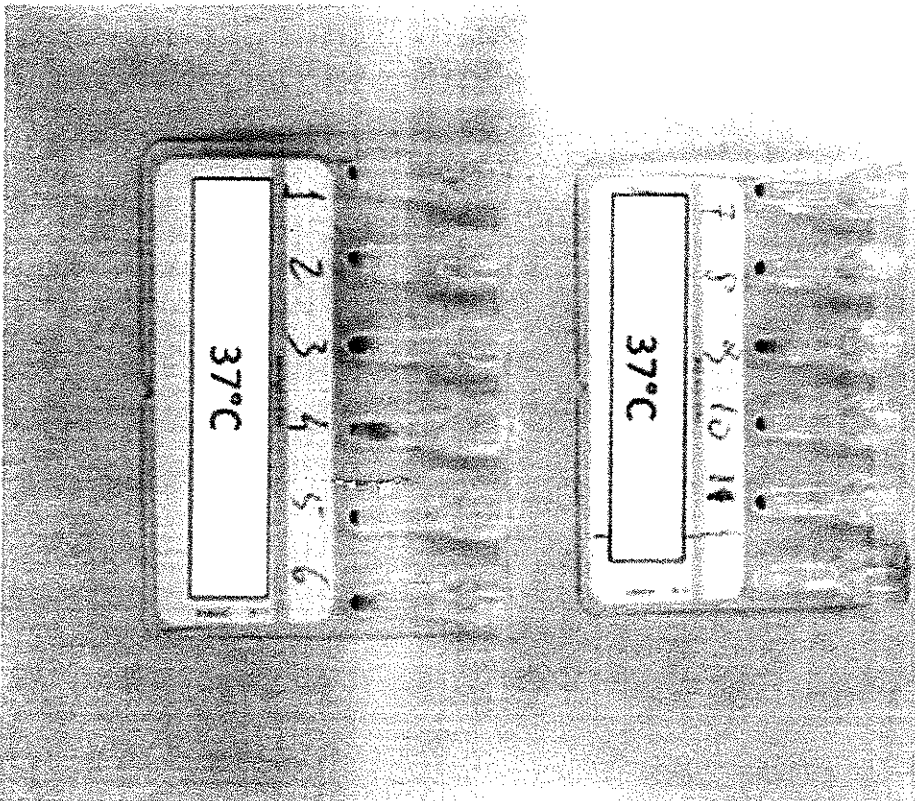
Information - Anticuerpos - Anticuerpos - Anticuerpos - Anticuerpos

Information - Anticuerpos - Anticuerpos - Anticuerpos - Anticuerpos

PROVA PRATICA N. 3



Seth Brant



MM
Ala
Roberto

